

SOME OF OUR REFERENCES

MALI • Updating mapping at a scale of 1:200,000 and modernization of the National Mapping Institute

Creation of a database and a new topographic map to a scale of 1:200,000 using SPOT 6 satellite images with national coverage in order to produce a common and coherent reference framework for mapping. A 1:1,000,000 derived map, a geoportal, a land use database as well as maps for 28 main cities of the country were also created. All this work was carried out at the Geographic Institute in Mali with technical assistance from IGN FI.

IGN FI has also led similar projects to update national maps and build on the capacities of the Geographic Institutes in Senegal and Burkina Faso.

HAITI • Aerial photography and LiDAR data acquisition

Within the framework of a project for reconstruction and managing risks and disasters, the World Bank funded a project aimed at producing complete coverage of Haiti with aerial photos and Lidar acquisition. This baseline data was then used to produce an orthophoto with a resolution of 25 cm on the whole territory and a high-precision DTM as well as various derived products.

BENIN • Creation of a national digital map

Modernization of baseline mapping and creation of national maps to scales of 1:50,000, 1:200,000 and 1:600,000. Planned over a three-year period, this project will supply useful information for the country's sustainable development. All work is performed locally, and a strong transfer of skills is made to the Geographic Institute in Benin with stimulus of IGN FI experts.

SERBIA • Technical assistance for the creation of a national spatial data infrastructure

A partnership between the Serbian Geodetic Institute (RGZ) and the Airbus Defence and Space-IGN FI consortium has enabled the Serbian centre for spatial data infrastructure to enter into its operational phase. The introduction of high-technology components along with the creation of data production workshops, the transfer of know-how and one-off experiences has enabled the production, update, organisation and dissemination of geographic data, in particular via the portal which has been set up.

GABON • Preliminary study and initial implementation of the national geomatic plan

The Gabonese government called on IGN FI for support in rolling out their national development strategy called 'Gabon Emergent' by carrying out a preliminary study before the implementation of a National Geomatic Plan (NGP). This project was aimed at analysing the needs and issues at stake and then making recommendations on the technical and organisational aspects of the programme. Four pilot projects were set up in close partnership with the various sectorial ministries and the first phase of implementing the NGP then went ahead.

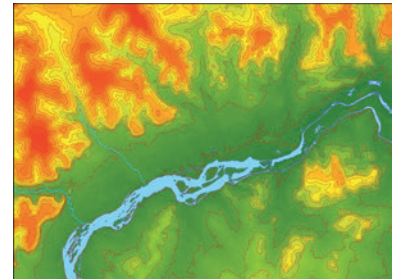
BANGLADESH • Assistance in managing the project to rework baseline mapping

IGN FI gave assistance to the Survey of Bangladesh in modernising its Geographic Institute. The contract covered the following phases: defining the global process, drawing up a quality plan and the calls to tender, processing and analysing the offers received, periodic assignments for experts during the project's critical phases.

Find more references at www.ignfi.com

As major player in the field of geomatics, IGN FI offers its expertise in the following areas: geodesy, metrology, mapping / national spatial data infrastructures, databases, geographic information systems, portals.

IGN FI's work is entirely based abroad, using the company's know-how in various sectors: agriculture, forests, the environment, civil security, borders...



IGN FI

7, rue Biscornet

75012 PARIS - FRANCE

Phone: +33 1 42 34 56 56

Fax: +33 1 42 34 56 51

info@ignfi.fr

