

DEFENCE CIVIL SECURITY

The in-depth, detailed knowledge of its territory is a key element for a State for setting its policies on risk prevention, management of catastrophes or good governance of its border areas.

The creation or update of military maps for the areas in which specific operations take place, the creation of mobile units that can be easily made operational, mapping and demarcation of land borders, delimitation of maritime spaces, 3D land visualisation tools, surveillance of vulnerable sites (metrology) or creation of dedicated training programmes: IGN FI accompanies its clients with utmost confidentiality by proposing tailor-made solutions.

IGN FI offers technical solutions, adapted and reliable tools which take into consideration the complete set of data concerning each territory.

OUR AREAS OF EXPERTISE

Advise, design and implement projects that are specifically adapted to the various elements of the defence and civil security sector:

- Acquisition of data (satellite and aerial images, images from drones, LiDAR acquisitions, field survey)
- Processing and integration of the data acquired
- Production of databases (2D, 3D) and maps to prepare, schedule and run military or security-based operations
- Implementation of GeoView® production lines
- Geometric assessment of new sensors (satellite or other types), with the possibility to integrate models into GeoView®
- Integration of geographic components, such as 2D and 3D land modelling and visualisation tools, into crisis management systems, terrestrial and maritime surveillance systems as well as command and control information systems
- Technical assistance, technology transfer and training
- Measurement of precise geodetic survey points, metrology
- Formatting, structuration and organisation of military geographic products as per NATO standards

OUR MEANS

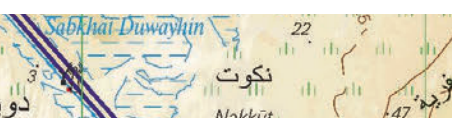
IGN FI provides its teams of specialists to clients:

- Sector experts (engineers with a background in the French Defence sector – including the Navy's hydrographical and oceanographic department for marine mapping, IGN Espace, IT engineering and services specialist companies...)
- Analysts experienced in creating profession-based information systems
- Experts in GIS and systems engineers
- Experienced project directors and managers

IGN FI offers tried and tested software to its clients, including:

- GeoView®, software for image processing and 2D/3D cartographic data digitising, specially designed for creating databases and military mapping and used in particular, by the French Ministry of Defence
- GIS solutions

DEFENCE



SOME OF OUR REFERENCES

CONGO • Terrestrial borders and delimitation of maritime areas: help with negotiations

This project aimed at giving support to the Congolese authorities during their exchanges with the border authorities of neighbouring countries.

This project included in particular the edition of map products over specific areas, a study on demarcating Congo's maritime areas as well as a large section of work given over to technical and legal training.

QATAR / SAUDI ARABIA • Marking out the international border

A political agreement based on the demarcation of the two countries common border was signed by Saudi Arabia and Qatar.

Mindful of the importance of working with an independent entity, both countries' governments entrusted IGN FI with the job of marking out the exact position on the ground of the 6 main border points, the actual demarcation of the border and creating detailed maps on various scales of the whole border area.

SRI LANKA • Post-Tsunami: help with reconstruction

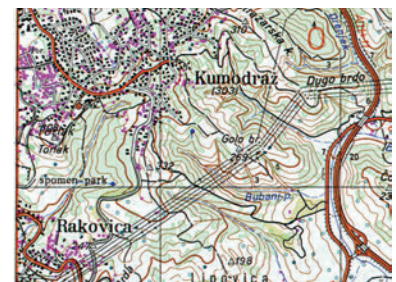
Work on the SIIRM (Spatial Information Infrastructures for Reconstruction Monitoring) began just after the tsunami that ravaged south-east Asia in 2004. The project provided Sri Lanka with up-to-date mapping information and GIS solutions in the field of land development. The data was used as a basis for creating cartographic applications and GIS aimed at reconstructing and developing the urban areas considered as high-priority. The complete contract included revising or creating maps which integrated the spatial data associated with reconstruction, the GIS applications to be used for visualising reconstruction monitoring and transferring know-how.

INDONESIA • Creation of catastrophe management centres

This project was led by the Airbus Defence & Space / IGN FI consortium and enabled the creation of a national catastrophe management centre in Jakarta as well as three regional centres. IGN FI was more specifically in charge of the mapping services included in the project and also provided permanent technical assistance for supervising setting up these centres as well as the maintenance of equipment.

SERBIA • Updating a map using satellite images

IGN FI ran a pilot project for the Serbian military mapping Institute which was aimed at updating a 1:25,000 scale baseline map using SPOT5 satellite images with a resolution of 2.5 metres.



IGN FI

7, rue Biscornet

75012 PARIS - FRANCE

Phone: +33 1 42 34 56 56

Fax: +33 1 42 34 56 51

info@ignfi.fr

Find more references at www.ignfi.com

As major player in the field of geomatics, IGN FI offers its expertise in the following areas: geodesy, metrology, mapping / national spatial data infrastructures, databases, geographic information systems, portals.

IGN FI's work is entirely based abroad, using the company's know-how in various sectors: land administration, agriculture, forests, the environment...

IGN FI